

TYPE OF PLANT: STAND-ALONE PHOTOVOLTAIC SYSTEM

Place: Sabionara d'Avio – Trent, Italy

Use: Electrification of a farm holidays

Power of the photovoltaic array: 1500Wp

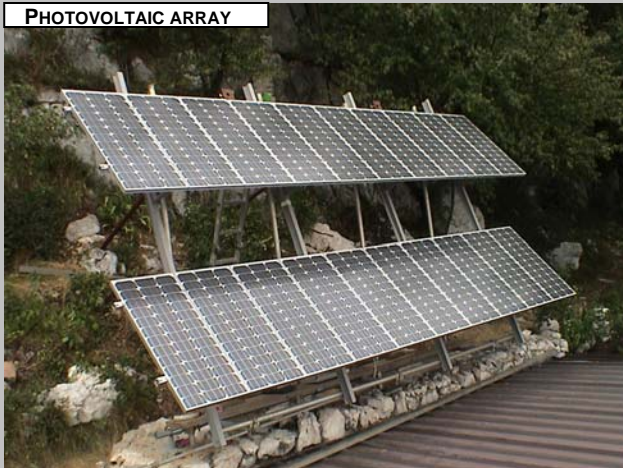
Regulator: 1x30A

Batteries: 21.6kW

Inverter: 4.4kW – 230Vac 50Hz, with integrated battery charger

Plant description: the photovoltaic array is installed on wall supporting structures, which can be manually adjustable. The system supplies a farm holidays composed by a kitchen, a dining room and bedrooms for the guests. The loads supplied are lamps, refrigerator and freezer, TV set, water sterilizer and pump. The hotel is opened all year round. In winter the energy is integrated by a generating set working for 2 hours per day. Year of installation: 2005.

PHOTOVOLTAIC ARRAY



JUNCTION BOX



BATTERIES



INVERTER+REGULATOR

