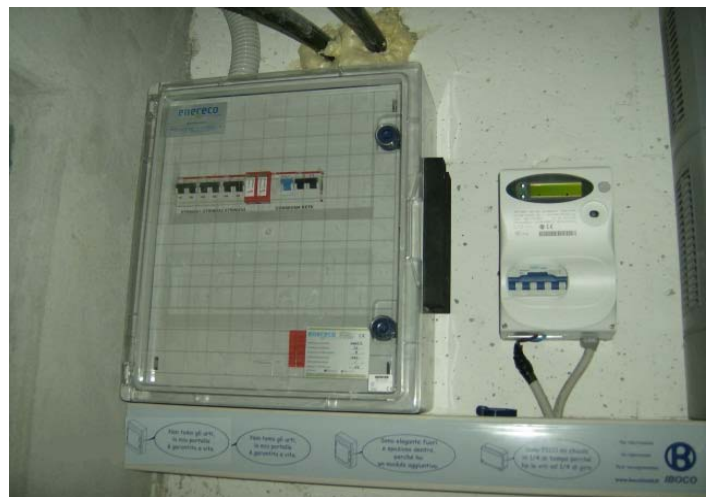


**TYPE OF PLANT: GRID-CONNECTED PHOTOVOLTAIC SYSTEM**

**Place:** Ferno (VA), Italy – private house

**Power of the photovoltaic array:** 4,32 kWp

**Plant description:** coplanar installation on a sloping roof with tiles - hot galvanized steel supporting structures with stainless steel bolts and nuts.



**Year of installation:** 2007