

**TYPE OF PLANT:** STAND-ALONE PHOTOVOLTAIC SYSTEM

**Place:** Fiera di Primiero – Belluno, Italy

**Use:** electrification of a private house

**Power of the photovoltaic array:** 450Wp

**Regulator:** 1x30A

**Batteries:** 10kW

**Inverter:** 2.6kW with integrated battery charger

**Plant description:** coplanar installation on a sloping roof. The photovoltaic array has been divided into 2 parts: on the eastern and on the western pitch. The system supplies the electrical loads of the house during the weekend and during the holidays period. In winter a generating set integrates the energy produced by the photovoltaic modules functioning for about 4 hours every 3 days. The loads supplied are lamps, refrigerator, TV set, radio and water pump. Year of installation: 2005

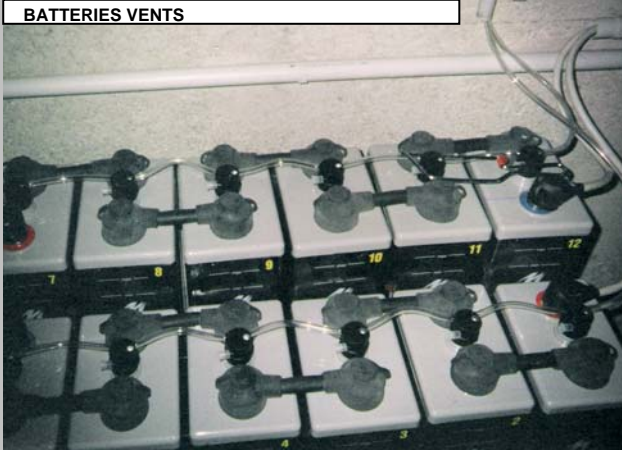
PHOTOVOLTAIC ARRAY



BATTERIES



BATTERIES VENTS



INVERTER+REGULATOR

