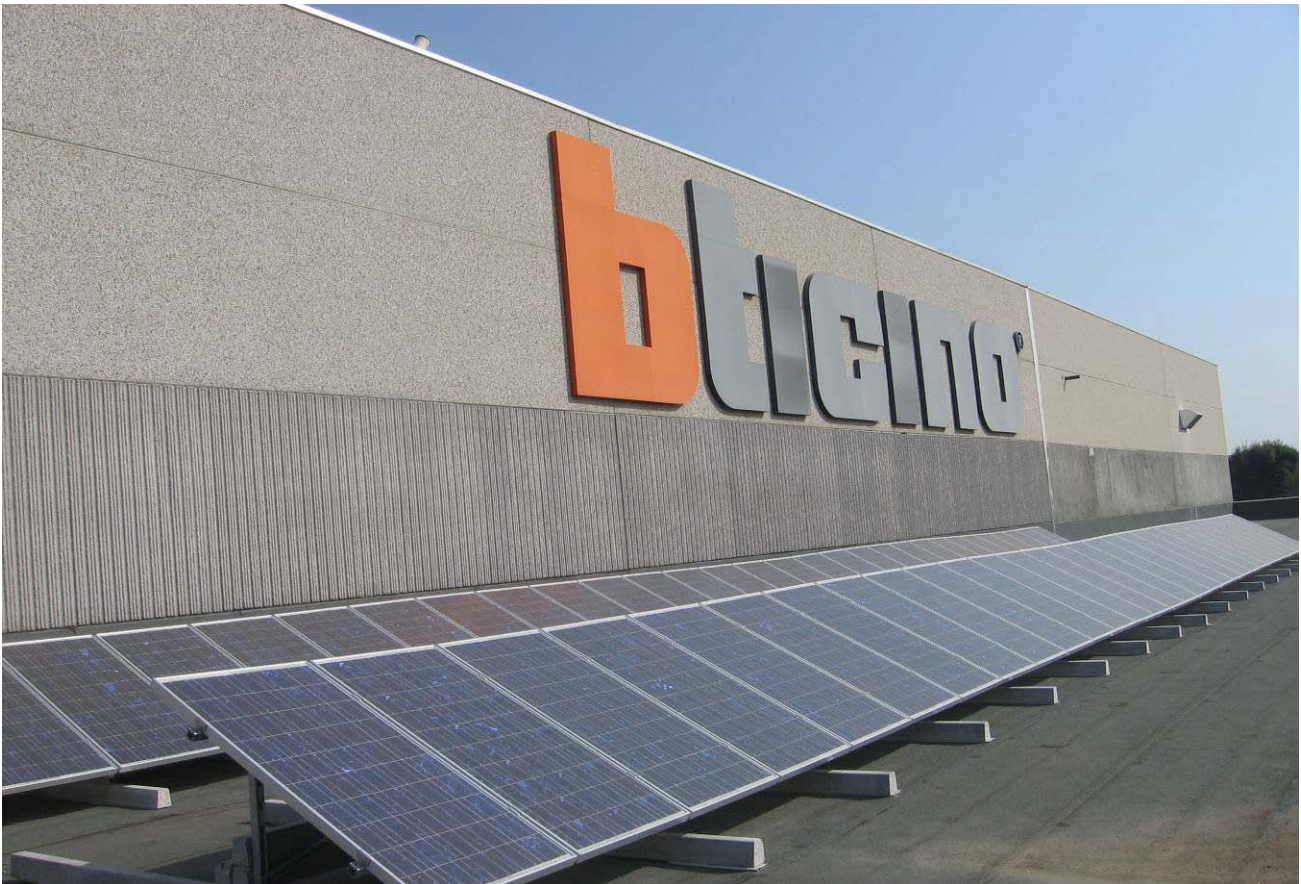


TYPE OF PLANT: GRID-CONNECTED PHOTOVOLTAIC SYSTEM

Place: Ospedaletto Lodigiano (LO), Italy – “Bticino s.p.a.” building

Power of the photovoltaic array: 10,2 kWp

Plant description: coplanar installation on a flat roof with tar covering - hot galvanized steel supporting structures with stainless steel bolts and nuts. The fixing of the structures on the roof is granted by suitable cement ballasts.



Year of installation: 2007